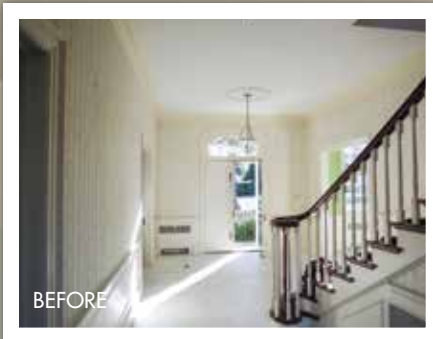




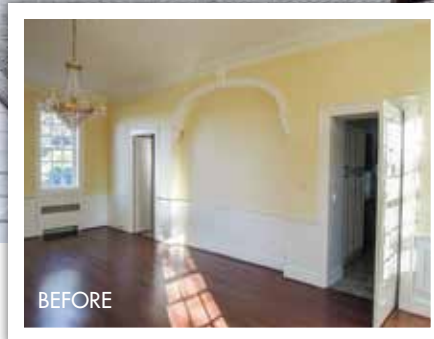
TIMELESS TRANSITIONAL

TEXT EMILY JACKSON
PHOTOGRAPHY GORDON BEALL

Heeding the call of the Virginia landscape, an architect and an interior designer open up a 1940s home with a contemporary flourish.



BEFORE



BEFORE

When architect Bob Paxton and designer R. David Craig were enlisted to update an idyllic Georgian home in Charlottesville, Virginia, they relished the opportunity.

The directive for the stately abode, nestled in a historic country club neighborhood, was twofold. Not only did the home need a smart renovation to usher it into the 21st century, but it also required a design scheme that would incorporate an existing collection of art and furnishings. The talented duo from Dalgiesh Gilpin Paxton Architects set their sights on creating a refreshed retreat for their empty nester clients that combined a welcoming atmosphere with comfortable amenities.

Designed in 1948 by Milton Grigg, the architecture firm's founder, the home was "a classic five-part composition with wonderful proportions, but like many houses built in the 40s, it was a little



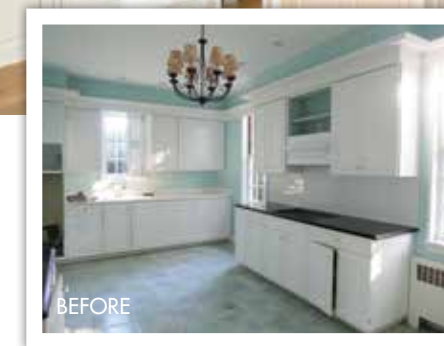
Previous pages: The property, once shrouded in overgrown boxwood, now features a newly curated landscape by Rachel Lilly that highlights architectural details and allows natural light to stream through the interiors. These pages, opposite and bottom left: Patterned wood floors replaced honed Carrara marble in the entrance hall and vestibule, creating an aesthetic connection to the surrounding spaces. The staircase's mahogany handrail was painted black to complement modern artwork displayed in the entry. Top: The dining room opens onto a terrace through double doors. A custom David latesta chandelier, Stark rug, and collected antiques strike an elegant chord.



introverted,” says Paxton. While the home boasted classical millwork and sophisticated curb appeal, the interiors lacked ease of access to the surrounding property, and natural light was scarce in the living quarters. To remedy that, Paxton fashioned two large bay windows leading to terraces and simplified hallways by removing unnecessary doors and replacing them with spacious cased openings. Craig echoed the luminous setting with woven shades to softly filter light and grass cloth wallcoverings to evoke warmth.

With the addition of a family room, master bedroom, and loggia, a more seamless connection was made to the garden elevation beyond the spaces. “Our task was to open the house up to the landscape and engage it—we have so many wonderful seasons to enjoy here in Virginia,” says Paxton. The exteriors of the new structures possess subtle differences that distinguish them from the home’s original facade, such as simple copper gutters and a trio of painted black doors that blend masterfully with the more elaborate details from the 40s. “When we’re adding onto a nice old building, we try to differentiate the new and the existing so future generations understand the history of

Opposite: The study, originally the home’s living room, was transformed into a quiet and relaxing sitting area off of the master bedroom. Wood paneled walls lend a textural element to the neutral space outfitted with Lewis Mittman chairs and Jonathan Browning sconces. Above: “This was the homeowner’s priority—he wanted his own bar to welcome guests into for a drink,” says Craig. “It’s a very inviting space.” A custom mahogany bar by Gaston & Wyatt is tempered with white painted millwork and a Phillip Jeffries grass cloth wallcovering. Architecturally, an airy vernacular was achieved with a wall of bay windows.



Left: The family room, part of a newly added wing, relates in style and scale to the kitchen and fireplace porch space. A white oak beamed ceiling draws the eye above, and the main floor's signature blue-green scheme sets a calming tone. Upholstered furnishings surround a thoughtfully designed mantel made of limestone and steel ribbing. This page, top: In the kitchen, pale grey cabinets and beams painted White Wisp by Benjamin Moore become a subtle backdrop for the dramatic verdant stonework. Right: "The wine room is like a piece of artwork in the kitchen," says Paxton. Urban Electric sconces illuminate the unique centerpiece filled with bottles collected by the wine enthusiast homeowners.





the house,” says Paxton.

Wood floors, punctuated with patterns of parquet in the entry and herringbone in the adjoining hall vestibule, establish a flow throughout the interiors. A decidedly transitional verve in rooms, like the limed white oak paneled study, allows for the owners’ collection of contemporary art and mix of modern and antique furniture to take center stage. “The dictate was to use the collection that they’d curated over a lifetime and find a place for everything. I don’t think we bought more than two or three new pieces for the whole house,” says Craig. The clients’ request for a blue-green palette inspired the designer to use varying shades of the tranquil tones—a Phillip Jeffries wallpaper soothes in the master bath while Benjamin Moore’s Annapolis Green enlivens the family room.

The kitchen, originally a service footprint divided into four smaller rooms, now reflects the couple’s passion for hosting with a wine room and separate cooking spaces. As the true hub of the home, the kitchen intuitively welcomes company into the dining room through a butler’s pantry passage and encourages a visit to the bar space close by. Along the main floor’s perimeter, abundant windows and doors framing garden views draw guests out to the natural surroundings. “The accessibility to the outdoors is just fabulous, it makes entertaining fun and easy. We’re really thrilled to have a house that we feel comfortable in,” says the owner of her stylishly appointed home.

Top: The garden elevation is now an extension of the residence complete with comfortable porch and terrace spaces. Paxton employed practical treatments such as aluminum clad windows, copper gutters, and a geothermal system to minimize maintenance. The home’s heating and cooling operates without the use of unsightly, noise-making outdoor compressors that detract from a building’s natural connection with the landscape. Above: The loggia with the fireplace offers the best seat in the house for sunset viewings with furniture by Gloster. Bevalo lanterns, bluestone floors, and a traditional blue ceiling add to the Virginia charm.



Above: Paxton converted an outdoor porch space and part of the original living room into a luxurious master suite. For the bed, Craig landed on a four-poster, upholstered Meredith O’Donnell design and layered it with coordinating Frette linens. Curtains in Jim Thompson fabric create billowing columns in between sets of double doors. Left: The master bathroom aims for optimal relaxation, including separate his-and-hers closets. The bay of the bathtub is perfectly on axis with a pool just beyond the windows, a detail that contributes to the home’s relationship with the garden.

